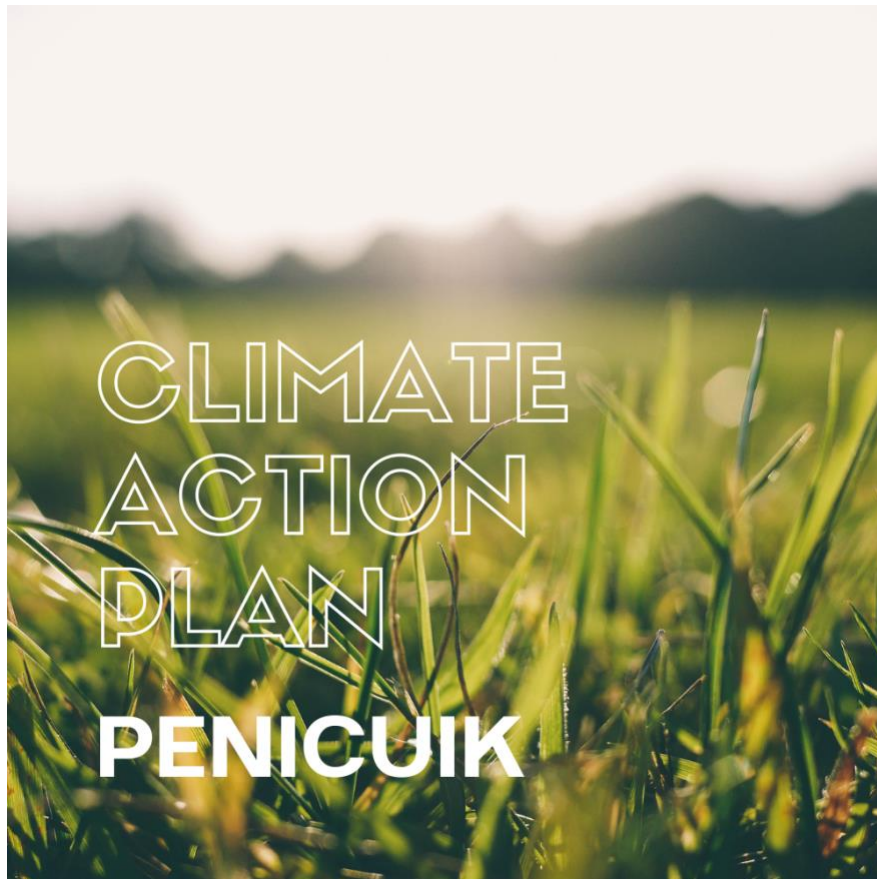


Community Climate Action Plan Penicuik



Commissioned by:



Funded by:



Produced by:



SKS Scotland CIC
Claire Whyte
Nicky Hesketh
Dr Susan Warren

February 2023

Table of Contents

1.	<u>EXECUTIVE SUMMARY</u>	<u>3</u>
2.	<u>INTRODUCTION & BACKGROUND</u>	<u>4</u>
3.	<u>METHODOLOGY & PROCESS</u>	<u>6</u>
4.	<u>ANALYSIS OF DATA COLLECTION PROCESSES.....</u>	<u>8</u>
5.	<u>20 MINUTE NEIGHBOURHOODS.....</u>	<u>15</u>
6.	<u>ACTION PLAN.....</u>	<u>17</u>
7.	<u>FUNDING OPPORTUNITIES.....</u>	<u>21</u>
8.	<u>APPENDICES.....</u>	<u>24</u>

1. Executive Summary

SKS Scotland CIC was commissioned by Midlothian Voluntary Action to undertake research in Penicuik to support the development of a community climate action plan. The aim was to promote the importance of community-led climate action and encourage more people to get involved.

This project engaged with people that were already involved in climate conversations and those who were not. The aim was to discuss what the climate crisis meant to them on a local level and how they can tackle it.

The work was initiated in September 2022, having been awarded funding from the National Lottery's Together for Our Planet programme.

The diagram below shows the work undertaken to produce this report.



From this research, a number of clear themes were established, which were discussed during both the drop-in sessions and workshops.

THEMES:

Energy use	Active & sustainable travel	Re-use, recycling & upcycling	Local food & food waste	Biodiversity & improving local spaces.
------------	-----------------------------	-------------------------------	-------------------------	----------------------------------------

During this process, the community was encouraged to consider actions that would address these climate issues, whilst aligning with previous projects and being appropriate for the capacity of the community.

These actions have been put forward and developed into the community action plan given at the end of this report, creating a piece of work that is hoped will be used as a working document going forward.

2. Introduction & Background

[Midlothian Voluntary Action](#) (MVA) was awarded funding from the National Lottery's Together for Our Planet programme, to develop a community-led climate action project. The two criteria chosen from the programme list that this project will achieve are:

- It supports the development of longer-term climate action within communities
- It celebrates the importance of community-led climate action and encourages more people to get involved

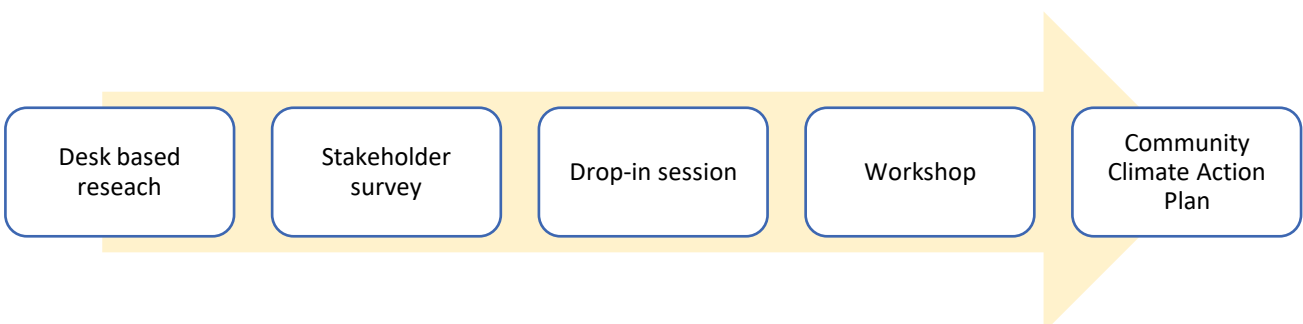
The project was awarded to [SKS Scotland CIC](#) (SKS) in September 2022, following a public procurement process.

Project Objectives

- A community climate action plan for Penicuik that contains objectives that are relevant to their needs, wants, and capacity
- Summaries of discussions from the community engagement events that capture the issues raised, how action could be taken forward, to what extent can the community do so without external support and resources, and challenges they may face without support from other agencies
- Assessment of what a 20-minute neighbourhood means for the community
- Ongoing climate activities that are being undertaken in the communities
- Funding opportunities to support climate action

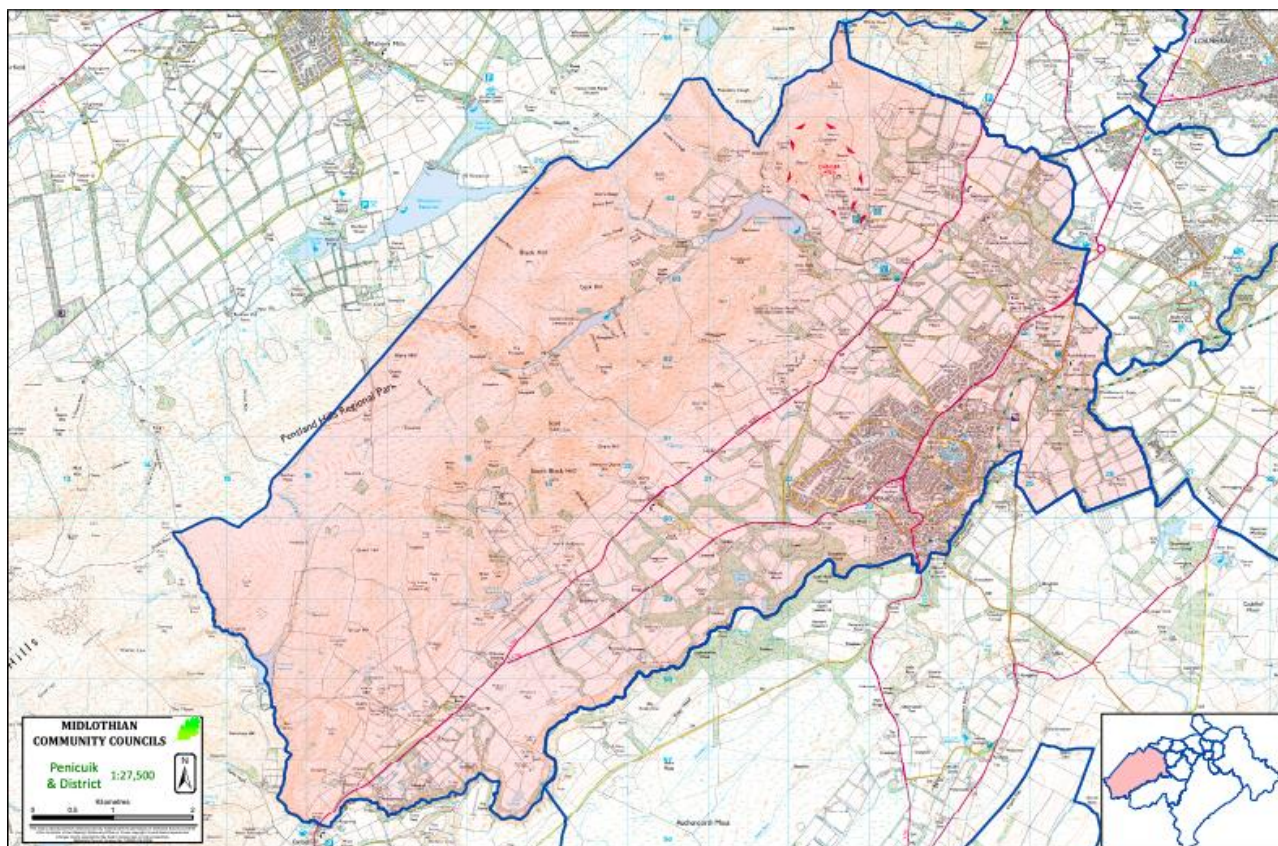
Project Approach

The preparation of this document took place between October 2022 to February 2023. It involved a number of different stages as summarised below:



Project Area

Penicuik and District Community Council's area¹ is shown in the map below and is the boundary of this project.



¹ file:///Users/clairewhyte/Downloads/Penicuik_and_district_Community_Council_boundary_map.pdf

3. Methodology & Process

Inception meetings were held with MVA, SKS and the community working group to understand the work which has already been carried out and that is underway in Penicuik with regard to climate action, along with **individual conversations** with key stakeholders. The [Penicuik Carbon Challenge](#) was discussed, pinpointing previous successes and areas which could be built on or improved.

SKS then carried out **secondary research** to achieve a greater understanding of existing information that could be used by Penicuik when considering taking their Community Climate Action Plan forward, which then led into the **primary research / community engagement process**.

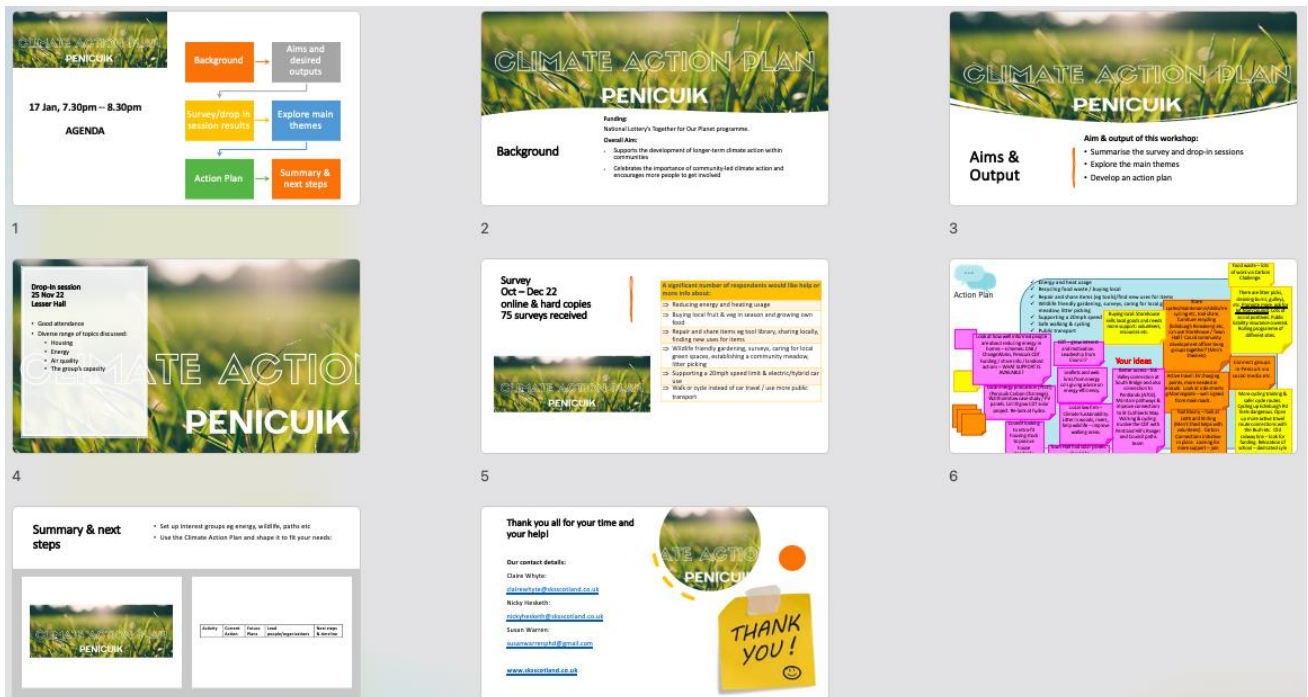
Community engagement

A programme of community engagement was designed to understand concerns and create the basis for an action plan that would prove to be the most effective for Penicuik and encourage more people to get involved.

SKS designed a **stakeholder survey**. Details of the survey’s methodology and analysis can be found in section 4 and appendix 1 and 2 of this report.

A **drop-in event** was organised on 25th November 2022, which was well supported with a good attendance and a diverse range of topics covered, including housing, energy, air quality and the group’s capacity.

An online **workshop event** was then held on 17th January 2023, to summarise the community engagement findings to date, explore the main themes to arise from this and encourage discussion and input from the attendees around the development of a climate action plan. The workshop was promoted on social media and set up via Eventbrite. The slides from this event are shown below:



Example comments:

Active travel: EV charging points, more needed in Penicuik. Look at side streets eg Morningside – well signed from main roads.

Buying local: Storehouse sells local goods and needs more support: volunteers, resources etc.

Look at how well informed people are about reducing energy in homes – schemes: CAB / ChangeWorks, Penicuik CDT. Funding / share info / landlord actions – WHAT SUPPORT IS AVAILABLE?

See appendix 3 for full view of slides.

4. Analysis of Data Collection Processes

Desk based research

The following desk based (or secondary) research was carried out to enable a full understanding of the background and current context for the development and delivery of Community Climate Action Plans and the implementation of 20 Minute Neighbourhoods. A short summary of each is provided below.

National context: policy and practice

(i) Climate Change and Net Zero

In response to the need to tackle the global climate emergency, the Scottish government published the [Climate Change Plan update](#) in December 2020, which reflects the increased ambition of the new targets set by the Climate Change (Emissions Reduction Targets) (Scotland) Act 2019. This legislation sets a target date for net zero emissions of all greenhouse gases by 2045.

To enable Scotland to meet these targets requires a rapid transformation across all sectors of the economy and society. The [Net Zero Nation website](#) is a ‘one stop shop’ for individuals, communities and organisations looking for information about what they can do to tackle the climate emergency, and learn more about the action that all of Scotland is taking. This resource identifies a number of key areas for groups and individuals to consider in relation to their everyday lives, and actions they can take to reduce their impact on, and help support our climate and the wider natural world.



These themes are as follows:

- Climate change
- Transport
- Food
- Waste
- Heating your home
- Nature

(ii) Community Climate Action Hubs

Specifically in terms of working with individuals and communities, the Scottish Government recognises the need to:

- Engage with the public and encourage people to move towards low carbon living
- Supporting communities to tackle climate change
- Deliver a just transition – ensuring a fairer and greener future for all

To help support communities to tackle climate change, the Scottish Government is supporting the development of a network of regional community climate action hubs spread across the country. This will provide a strategic regional approach to climate change action. The intention is that these hubs will help local community groups to:

- Develop local plans
- Take up community funding opportunities
- Facilitate networking
- Ensure a joined-up approach is being taken to tackling climate change at a regional level.



This network is currently being hosted by the [Scottish Communities Climate Action Network \(SCCAN\)](#). SCCAN is a volunteer-led network that supports community-led action in Scotland to address the climate and nature emergency, and work for a just, thriving and resilient Scotland. Network Co-ordinators have now been recruited for each region in Scotland. These Co-ordinators are currently working to build a clear picture of actions local communities are taking to address climate change, what barriers to they face, and what additional resources are needed in communities to enable them to take action on climate change. They are also facilitating discussions on the shape and design of climate action hubs. Penicuik is served by the Midlothian Network Co-ordinator.

Local context: Penicuik Carbon Challenge

The Scottish Government's Climate Challenge Fund ran from 2008-2022 and supported communities across Scotland to take action on climate change through a range of measures, including reducing reliance on car travel, cutting down on waste, growing local food, and lowering energy use in homes and community buildings. The [Penicuik Carbon Challenge](#) was funded by CCF, and ran from April 2020-March 2022. The project had five objectives:

- **Climate Change awareness:** Support at least 2000 people in our community to increase their awareness and understanding of climate change and enabling them to make informed choices on how to move to low-carbon lifestyles.
- **Reducing carbon footprint:** Engage with 3000 people to reduce their carbon footprints through reducing food waste, textiles and other items going to landfill, fixing things and shopping locally and using refillery, saving 550Tonnes project CO₂e.
- **Health and wellbeing:** Increase the health and wellbeing of individuals through participation in active and positive low carbon actions, leading to empowerment through training and building skills, confidence and shared experiences.
- **Partnerships:** Build a strong set of informed relationships between local groups/organisations, through active participation, so that their ability to respond to the climate emergency is facilitated and supported by mutual understanding and sharing vital for legacy and sustainability.
- **Low carbon vision for 2045:** Help 100 young people to create a What if? - Local low carbon, just and climate resilient vision for Penicuik 2045, so that they can feel empowered, act positively, and local changes.

A wide range of projects were delivered under each objective, including:

- Food: Food Bank, community meals, community fridge, growing, shop locally
- Bikes: care and re-use
- Textiles: Re-use & upcycling
- Community garden
- Tool library
- Climate change literacy: carbon conversations, talks and workshops



The Penicuik Carbon Challenge Final Report provides a detailed account of the activities undertaken and the outputs and outcomes delivered. This report highlights the importance of collaboration and partnership working with seventeen different organisations in delivering, and ensuring the future sustainability of this work:

“The sustainability of the project is one of its best achievements and almost all the activities of the project will be continuing through the efforts of volunteers and through collaborations with other community groups and activists.”

Clearly this project has left a very significant legacy for Penicuik, and this work provides an excellent basis for the development of a Climate Action Plan.

Case study - Community Climate Action Plans

Funded by the Scottish Government, and delivered by Keep Scotland Beautiful, the [Community Climate Action Plan programme](#) supported seven communities to produce bespoke climate action plans, through providing:

- Support and advice from a community climate facilitator
- Inspiring ideas of what could be possible from communities across Scotland and beyond.
- Input from groups who have already developed a Community Climate Action Plan with Keep Scotland Beautiful, and access to a growing network of communities.
- Support to help plan activities that will be most suitable for each community.
- Signposting to potential funding opportunities and further technical advice if needed.

The communities involved were from: Islay, Jura and Colonsay; Arbroath; Newcastleton; Knoydart; Pollokshields; Ferguslie; and Shotts.

The output from the work in [Kirriemuir \(Arbroath\)](#) provides a good example of a Community Climate Action Plan.

The [Sustainable Kirriemuir](#) website provides the most up to date action plans under four themes:



- Food growing
- Reducing waste
- Biodiversity
- Active Travel

The Action Plan under each theme identifies all current and planned activities, with a lead contact and timescale for delivery.

Alongside this work, KSB has produced a succinct '[Guide to Climate Change](#)', which provides information on everyday actions to help reduce people's carbon footprint. As a generic guide for individuals and communities in Scotland, this resource is not able to take account of the context specific issues of individual communities, hence the need for bespoke climate action plans in different communities, to ensure that actions are supported and achievable for that community.

[Learning points from desk-based and case study research:](#)

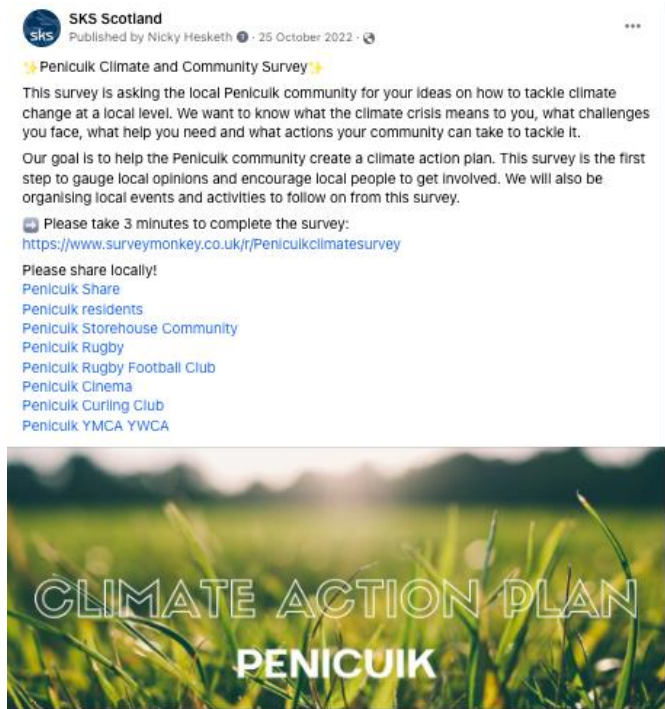
- There is a strong imperative and legislative framework for delivering Scotland's Net Zero emissions target by 2045.
- There are a large number of resources available providing generic guidance for individuals and communities about how to take action on climate change.
- Local communities are already undertaking a wide variety of actions to help tackle the climate emergency, and some communities now have Community Climate Action Plans in place. However, more support is needed to help communities on their net zero journey, to ensure that they have the necessary knowledge, resources and confidence to identify, plan and deliver action relevant to their local context and circumstances.
- The new network of Community Climate Action Hubs co-ordinated by SSCAN is an important step in understanding how local communities can best be supported to tackle climate change.
- Grant funding via the Climate Challenge Fund was vital in providing the necessary resources to enable the community of Penicuik to take significant action to address climate change locally.
- The work and legacy of the Penicuik Carbon Challenge provides an excellent basis from which to develop a Community Climate Action Plan for the community.

Stakeholder survey

Methodology

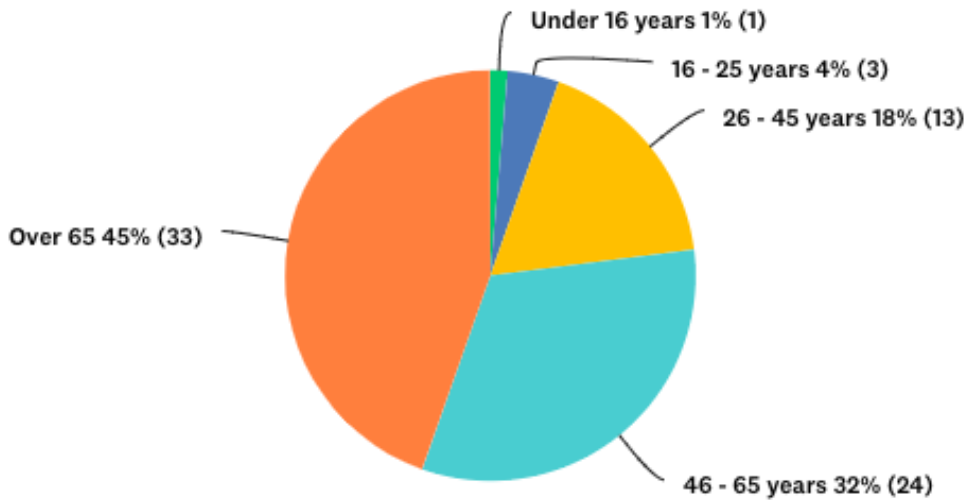
A community survey was undertaken on behalf Midlothian Voluntary Action to inform a Community Action Plan for Penicuik. The survey was open during Oct – Dec 2022, and was available to fill out online using a link / QR code or on paper copies, and issued via:

- Facebook – Posts were made on SKS’s page, and local organisations tagged and requested to share.
- Paper copies were available to pick up and drop off at the Storehouse, Town Hall, Ladywood Centre, the YM/YWCA, Scots Corner Army Community Centre and the SureStart Centre.
- The survey was also sent to Penicuik High School (where it was shared with students by the Depute Head Teacher via Google Classrooms) and Beeslack High School.



A total of 75 surveys were submitted during this time.

Most respondents live in Penicuik (78%), with 14% within 3 miles of the town and 8% more than 3 miles. Almost a fifth of respondents are disabled or have a condition that makes it hard to get out and about. There was a good age spread of respondents, as the chart below illustrates:



The summary of the main points to come out of the survey is shown in the table below. The full survey analysis is in appendix 1 and 2.

A significant number of respondents would like help or more info about:
⇒ Draught proofing & insulation
⇒ Installing a more efficient heating system
⇒ Carrying out a home energy audit
⇒ Growing your own food
⇒ Buying local fruit & veg in season
⇒ Repairing items
⇒ Shared use of items eg tool library, sharing locally
⇒ Find new uses for items rather than throwing them out
⇒ Wildlife friendly gardening
⇒ Volunteering to care for the environment
⇒ Litter picking
⇒ Wildlife surveys eg birds, butterflies, hedgehogs
⇒ Caring for local parks and other green spaces
⇒ Help to establish a community meadow
⇒ Walk or cycle instead of car travel / use more public transport
⇒ Supporting a 20mph speed limit
⇒ Electric or hybrid car use

A selection of comments from respondents, when asked if there were other environmental issues which they thought were pertinent to Penicuik, include:

- ⇒ *Plant fruit trees, ask housing builders to create green more green space when building houses*
- ⇒ *Litter and dog fouling and bins being emptied regularly.*
- ⇒ *The rivers often smell of washing power which doesn't seem right*
- ⇒ *Off road Cycle route needed from Penicuik to Leadburn.*
- ⇒ *I believe the main issue is the commuter / journey times to Edinburgh by bus. They are too long and people have to rely on cars. Also lack of public transport routes to RIE and Gyle/Edinburgh Park.*
- ⇒ *There are too many new houses destroying good agricultural land, bringing more dogs and taking up the land where people used to walk their dogs. This is unsustainable.*
- ⇒ *There has been sad neglect of the waterways and ponds in recent years.*
- ⇒ *Too many trees being cut down. Not enough drainage.*
- ⇒ *I think there could be a lot more accurate information about ways to help mitigate climate change. Encouragement to not have artificial lawns etc.*
- ⇒ *Need better playparks for the children*
- ⇒ *Flooding. A lot is caused by a lack of maintenance. You see the sweepers and drain cleaners AFTER the rain. It's forecast why is it not done prior?*
- ⇒ *Unfortunately, Penicuik is not a 'smoke free zone' ...it will be interesting to see how the increasing community habit of polluting the fresh air, via burning materials in solid fuel burners affects people and their well-being.*

SWOT Analysis from primary & secondary research

The following SWOT Analysis provides a framework for Penicuik on which to analyse the above information and note strengths, weaknesses, opportunities and threats, building a bridge between perceived issues and possible opportunities to help address them through a variety of approaches.

Strengths

- Penicuik already has several community groups active in addressing climate and environmental issues, including the Carbon Challenge, Penicuik Storehouse etc.
- Penicuik has a tool share scheme, food growing initiative, nature connection & foraging walks planned - through Carbon Connections.
- There is a strong desire in the community to move climate action projects forward.

Weaknesses

- Volunteer fatigue may be an issue in trying to put a climate plan into action.
- Lack of awareness in Penicuik as to what is already happening and set up.

Opportunities

- Develop stronger communication and links between the various existing community groups in Penicuik, to develop and strengthen their combined output.
- Improve promotions what is already happening around climate change to improve awareness and encourage input from a wider community.
- Find out more about reducing energy usage in homes and what support is available through, for example energy companies.
- Examine other local energy production schemes such as Walthamstow, Linlithgow. Look at hydro opportunities again.
- Improve active travel routes and connectivity to Pentlands, St Cuthbert's Way etc.
- Look at getting more/better located EV charging points in Penicuik.

Threats

- Lack of volunteers/capacity prevent projects moving forward.
- New developments (housing, roads etc), the environmental impact of which hasn't been properly taken into account and has affected drainage, environment, travel routes, road speed etc.

5. 20 minute Neighbourhoods

Policy context

The current Scottish Programme for Government 2022-23 supports the idea of 20 minute neighbourhoods, which defines this concept as a neighbourhood: ‘where people can meet their needs within a 20 minute walk from their house – enabling people to live better, healthier lives and supporting our net zero ambitions.’ (ClimateXChange, 2021, p4). However, as identified by [ClimateXChange](#), broader definitions also exist, which include cycling and public transport as other travel modes within these neighbourhoods.

Research undertaken by ClimateXChange, draws together Scottish, UK and international examples and baseline evidence on the concept of ‘20 minute neighbourhoods’, and how it can be best translated in a Scottish context. The project identifies areas of good practice, and takes account of Scotland’s geography, demography, economy, governance and relevant policy drivers to inform the translation of the concept.

[Our Place](#) highlights that 20 minute neighbourhoods are not simply about accessing amenities. They can have real benefits for health, the environment and the local economy. They can help to reduce car use, encouraging people to walk, wheel and cycle more, provide easy access to green spaces and help to build connections and a positive sense of community and belonging. Generally, a 20 minute neighbourhood will have the following characteristics:

- **a safe, accessible, and well connected movement network** for pedestrians and cyclists
- **high-quality public spaces**, streets and open space
- **good access to services** that support local living
- **a variety of housing types**, of different sizes, affordability and tenure, that supports diversity, the ability to age in place, and housing densities and that support local services
- **inclusive and easy access to public transport** that caters for different needs, connecting people to jobs and other services further afield
- **high quality green spaces** for people to enjoy and opportunities for local food production
- **thriving local economies** with employment and opportunities for community wealth building
- **good digital connectivity** to enable flexible working, business opportunities, and remote access to public services
- **formal and informal play** spaces for children
- **community participation** and local engagement opportunities

20 minute neighbourhoods in practice

A recent study undertaken by [Forth Environment Link](#) into the applicability of the 20 minute neighbourhood concept within a local, rural community setting provides some valuable insights into the practicalities of putting this concept into action. Centred on the community of Drymen in Stirlingshire, this study found that whilst many drivers were keen to use alternative modes of transport, there was a lack of infrastructure to support active and sustainable travel. The need for good quality walking and cycling routes, safe from speeding cars, allied to a better, more dynamic public transport system were high on the community’s wish list.

The issue of alternatives to car use mirrors the findings from Penicuik. Given that Scotland-wide, transport is the largest contributor to emissions in Scotland, with almost 40% coming from car journeys (Our Place, 2018), this is clearly a vital area for action within the Penicuik Climate Action Plan, and will require significant resources to address.

More widely, the work in Drymen highlighted that the concept of a neighbourhood where you can 'live well locally' is the key – a neighbourhood that supports active travel, boosts the local economy and addresses inequality by ensuring people are better connected to services which benefit health and wellbeing.

Overall, whilst the concept of the 20 minute neighbourhood has significant potential to help communities to tackle climate change, whilst also supporting individual and community wellbeing. However, turning this concept into reality in communities across Scotland poses many challenges, and it is important to understand the challenges and opportunities in the context of each community setting.

Penicuik 20-minute neighbourhood

The community was asked in the survey how easily their needs were met within 20 minutes of their home. 74% felt most or some of their daily needs could be met, however, the general understanding of what a 20-minute neighbourhood meant, was low.

"I guess it depends what is meant by "daily needs". We can do it shopping easily enough but other leisure activities are not available in town really."

Banking services and work were the main reasons for people to travel out with their neighbourhood.

6. Action Plan

This Action Plan provides a summary of the main activities that are and/or could be developed in Penicuik to help the community to take further action on climate change. Whilst there is overlap and interrelationships between these activities, for the sake of clarity, they have been grouped under five main themes:

Energy use	Active & sustainable travel	Re-use, recycling & upcycling	Local food & food waste	Biodiversity & improving local spaces.
------------	-----------------------------	-------------------------------	-------------------------	----------------------------------------

Under each activity, the plan identifies current action and potential avenues for future development. It also highlights the organisations key to taking this work forward, with an indicative timeline.

In developing this plan, a number of overarching themes also emerged. These will need to be addressed and/or developed to help ensure that the community’s ambitions and desires to tackle climate change, and to live in a thriving, sustainable local community, can be met. These themes are also woven into the action plan where possible, and can be summarised as follows:

- **Funding**, in particular revenue streams, to support delivery and development of services and activities (see Section 7 for further details)
- **Premises** to provide locations for storage, skills training, merchandise etc.
- **Ambassadors** to champion particular projects
- **Volunteers** to help in the delivery of projects **and** a shift towards community self-help, to move from a service delivery to a community ownership model for delivery of activities and services in the community.
- Development of an **exchange economy**.

Activity	Current Action/context	Future Plan	Suggested Lead People / Organisations	Timeline
Energy use				
Reducing energy usage & improving energy efficiency in homes	Council looking to retro-fit housing stock to Passivhaus standard – funding is limiting action.	Increase awareness of home insulation schemes. Showcase what has already been achieved (eg Town Hall) to show progress and motivate. Identify and secure funding for retrofitting.	Citizens' Advice Bureau, Changeworks (Regional Energy Advice, Crystal FM Midlothian Council – Penicuik Heritage Regeneration Project, Storehouse, Penicuik Library, Midlothian Voluntary Action.	2023-24 2023-24 Ongoing from 2023
Community renewable energy schemes	Revisiting 2010-11 hydro scheme feasibility study.	Penicuik CDT to set up Board/working group to explore opportunities: hydro, PV panels for homes/buildings. Look at case studies of similar schemes (Walthamstow & Linlithgow).	Penicuik CDT, SSCAN Midlothian Climate Hub Action Hub Co-ordinator.	2023-2024
Active & sustainable travel				
Electric charging points	Lack of EV charging points in Penicuik. Storehouse has drafted grant application to locate one at back of premises. Midlothian-wide EV charging network ended 1/1/23.	Identify locations to site more and/or well signposted charging points. Secure charging point at Storehouse Feed into development of Midlothian Council business case for securing investment in EV charging network.	Storehouse & Midlothian Council.	2023-24 2023-24 2023-24
Bicycle refurbishment, maintenance & skills training	Bike refurbishment & bike maintenance skills training scheme in operation.	Extend scheme to offer bike skills training to increase cycle confidence. Explore funding opportunities to support this. Explore potential link with Midlothian Council - CLLE workshop in Loanhead	Penicuik CDT	2023-24
Creating a network of safe active travel routes	Lack of safe and/or segregated cycling routes in and around Penicuik.	Map out network of opportunities to create a safer cycling (and walking) network eg open up cycle/walking route through Bush Estate; use of old railway line; path to link to	Set up working group to take this forward – to include Midlothian Council – Active	2023 & ongoing

	New Midlothian Active Travel Strategy due for publication 2022/23.	relocated school; links to Pentland Hills & Esk Valley cycle/walkway. Link in with Midlothian Traffic Roads & Paths group (MTRaP) Identify & apply for funds to build case for active travel routes.	Travel, Sustrans, Penicuik CDT +++	
Re-use, recycling and upcycling				
Sharing tools, skills and knowledge	Tool library in operation. Issue of ensuring tools restored/repared. Asset bank of tools etc from Carbon Challenge needing a new home. Upcycling – sewing and craft lessons hosted by Penicuik Ambassadors HQ (PCDT).	Extend tool library to provide a ‘Library of Things’ to make all assets from Carbon Challenge available (including space for workshops & skills/knowledge sharing). Consider develop on-line database of ‘Library of Things’. Link up with Men’s Shed for tool restoration/repairs. Community-wide, look at opportunity to connect up organisations needing storage.	Penicuik CDT, Men’s Shed, Food Fact Friends, Storehouse, Midlothian Council - CLLE, SSCAN Midlothian Climate Hub Action Hub Co-ordinator.	2023-24 & ongoing
Local food & food waste				
Buying local	Storehouse provides hub for buying local produce & crafts. Refillery running since 2021.	Secure funding to enable use of whole Storehouse premises. Promote and encourage volunteering at Storehouse. Promote and increase use by local residents.	Storehouse with support from wider community. Crystal FM	
Zero-waste community meals	Ladywood Leisure Centre provides zero-waste community meals.	Engage recipients of meals in lunch preparation to help with shift to a community ownership approach.	Penicuik CDT +++	Ongoing
Local food distribution	Community Food Bank/Fridge in operation.	Service continues in the community. Look at storage options with other local providers.	Food Fact Friends	Ongoing

		Provider – Food Fact Friends, to explore extending service to include furniture recycling.		
Food growing	Penicuik Community Gardens Steering Group continues to develop community garden with planning application for new structures. Lack of allotment sites in Midlothian limits resident's food growing.	Development of new infrastructure for community garden. Explore opportunity to link up residents with gardens which they can't maintain, with others keen to grow food. Penicuik CDT to work with NonStuff to design Food Growing Workshops.	Penicuik Community Gardens Steering Group, Penicuik CDT, Midlothian Council – Land Resources, NonStuff, Central Scotland Green Network Trust, Crystal FM.	
Biodiversity & improving local spaces				
Litter picking	Litter picking events already happening, but volunteers always needed to tackle litter.	Develop and promote rolling programme of litter picks at different sites. Access appropriate kit from Midlothian Council Street Cleaning.	Penicuik CDT. Midlothian Council – Street Cleaning	Ongoing
Wildlife friendly gardening	Ad hoc by local residents.	Explore provision of wildlife friendly gardening skills and tools sharing as part of wider 'Library of Things'.	Penicuik CDT	2023-24

7. Funding Opportunities

Securing funds will be vital to ensure the development and delivery of a number of the activities, services and infrastructure identified in the Climate Action Plan. Whilst not exhaustive, the list below provides a guide to some of the funds that could help with this process. In addition, Midlothian Voluntary Action will be able to signpost to potential funding sources.

(i) Support for a range of climate/sustainability projects

National Lottery Community Fund – Awards for All

This is a relatively quick and straightforward way to apply for funds between £300 and £10,000 to support what matters to people and communities. The fund is open to voluntary, community and public sector organisations, and applications need to do at least one of the following:

- Bring people together and build strong relationships in and across communities
- Improve the places and spaces that matter to communities
- Help more people to reach their potential, by supporting them at the earliest possible stage.

SCVO – Funding digest

Even if you are not a member of SCVO, this website is a great source of information about everything to do with funding, including regular updates on funding available.

Naturesave Trust

This scheme awards funds between £500 and £5,000 to support nature conservation, renewable energy, circular economy and help to develop more sustainable communities.

Vegware Community Fund

This fund can provide revenue funding for a range of community projects with sustainability at their centre. Grants are intended to cover core costs, which could include: stationery, teas/coffees for volunteers, equipment hire, heating, web hosting, and internet access and so on. It's the goal of the fund to provide a contribution to allow groups to engage in their chosen task, develop or expand existing projects, or provide a basis from which to apply for further project funding. Grants range from £240-£2,400 per annum, and are reviewed annually.

Magic Little Grants

Funded through the People's Postcode Lottery, this fund provides small grants of £500 for a range of community projects, including those supporting: improvements to biodiversity and green spaces; increasing community access to outdoor space, responding to the climate emergency and promoting sustainability.

(ii) Energy Saving

CARES Funding

CARES can support a wide range of projects including installing renewable technologies in community buildings, community benefits and shared ownership. Applicants must be constituted non-profit distributing community organisations, including organisations with charitable status,

that are established and operating across a geographically defined community or faith groups.

Funds include:

- Let's Do Net Zero Community Buildings Fund
- Let's Do Net Zero: Off-Electricity Grid Communities Fund
- Community Heat Development Programme

[Energy Savings Trust](#)

The Energy Savings Trust provides information, advice, grants and loans covering a range of areas to reduce energy use and carbon emissions. This includes support for home energy efficiency and low carbon travel. The resources available on this website provide an excellent resource for individuals, organisations and business.

(iii) Active and sustainable travel

[Paths for All - Smarter Choices Smarter Places Open Fund](#)

This fund aims to encourage people to change their everyday travel behaviours. Grants are available to encourage people to use public transport or other sustainable options such as buses and community car clubs for longer journeys; walking and cycling for short journeys, and home-working to replace daily commutes. This also includes grants to help build an evidence base for the need for sustainable travel interventions within a local community. The fund is open to a wide range of community, third sector, and other organisations. Grants are between £5,000 and £10,000 and need to be match funded (50% match in kind and cash).

There is also a Smarter Choices Smarter Places Local Authority Fund. This is only open to local authorities, to support them to encourage less car use and more journeys by foot, bicycle, public transport and car share.

[Paths for All – Ian Findlay Path Fund](#)

This fund supports the improvement of local paths within and between communities, making it easier for people to choose active travel and public transport for everyday journeys. The fund supports path management projects that:

- Demonstrate that they will make it easier for people to choose active travel and public transport to reduce dependency on car usage
- Improve accessibility and resilience of existing paths between homes, community facilities, active travel routes and public transport facilities
- Remove barriers to make existing paths more accessible to more people
- Link paths to community destinations such as homes and public transport connections
- Improve and create routes to aid the development of 20-minute neighbourhoods

The fund is open to a wide range of community and third sector organisations. Grants are between £5,000 and £10,000 and need to be match funded (30% match in kind and cash). For those at an early stage in their project, the funder can assist with a greater proportion of initial feasibility study and design costs.

(iv) Circular Economy & zero waste

[Zero Waste Scotland – Transition Fund](#) (links with this fund to energy use and renewables)

This fund is designed to support social support social sector organisations (SSOs) and the wider third sector to make the transition to carbon net zero. The fund will support projects that will reduce carbon footprint including activities that: reduce energy consumption; improve energy efficiency; develop or move to renewable energy sources; transition to sustainable transport options; undertake scaling of local food production and supply; minimise or re-purpose food waste; develop circular economy products, services, processes and practices. The fund provides loans from £10,000. A small grant may also be available for SSO's who have a particular circular economy focus or are proposing specific projects with a focus on re-use, repair and leasing/sharing models.

The Zero Waste Scotland website also has a great range of materials, training and support available to help organisations take action on waste in their community.

(v) Biodiversity & improving local spaces

[National Lottery Community Fund – Climate Action Fund](#)

This fund supports projects that focus on the link between nature and climate, and that use nature to encourage more community-led action. In particular, the fund is looking to support projects that show:

- How creating a deeper connection with nature will lead to a change in people's behaviours and greater care for the environment.
- How by bringing nature back into our communities, we can help communities to reduce or adapt to the impacts of climate change.

The fund is open to community and voluntary organisations, charities, and the public sector. Most projects will be between £300,000 and £500,000.

[TCV - The Chestnut Fund](#)

This fund supports grassroots groups and initiatives wanting to deliver practical volunteering that improves the natural physical environment locally and strengthens connections between people and green spaces. The fund offers small grants of up to £500 which have a big impact. All community, Friends and other groups who are part of TCV Community Network are eligible (it is FREE to join this network). Grants are used to support groups setting up, cover their first year of insurance, buy tools and equipment, and cover the costs of training or connecting with other groups in the TCV Community Network among other things.

[The Mushroom Trust – Improving Local Greenspaces](#)

The Trust supports the creation and improvement of greenspaces, particularly in urban environments, through an emphasis on horticultural aspects. The Trust helps to fund projects throughout Scotland, especially those in Edinburgh and the Lothians. The types of projects supported includes: improvement of public parks, the development of allotments, the commissioning of landscape designs for long term planning, the planting of community gardens and

orchards, and the creation of therapeutic garden spaces. The Trustees encourage applications for the initial costs for design work in connection with new projects where this has not yet been considered

[NatureScot](#)

The Future Routes Fund was launched in 2018 as part of Scotland's Year of Young People, with funding available for young people to deliver activities, projects and ideas which engage people with nature.

(vi) Future developments – A Community Climate Action Hub for Midlothian

As described in Section 4 (ii), the Scottish Government is supporting the development of a network of regional community climate action, currently hosted by the Scottish Communities Climate Action Network. The intention is that each region will develop a clear proposition to government for a Climate Action Hub, which will then act as a focal point for information and resources for communities in tackling climate change. It is important that this Penicuik Community Climate Action Plan is fed into the developing plans for a Midlothian Climate Action Hub. This will ensure that the ambitions, needs and barriers identified by the community of Penicuik are heard at the regional level, and can help to shape the nature of resources and support made available through any future climate action hub.

8. Appendices

Appendix 1 - Penicuik Climate and Community Survey Analysis

Appendix 2 - Penicuik Climate and Community Survey - Data Summary

Appendix 3 - Penicuik Workshop Slides and Notes